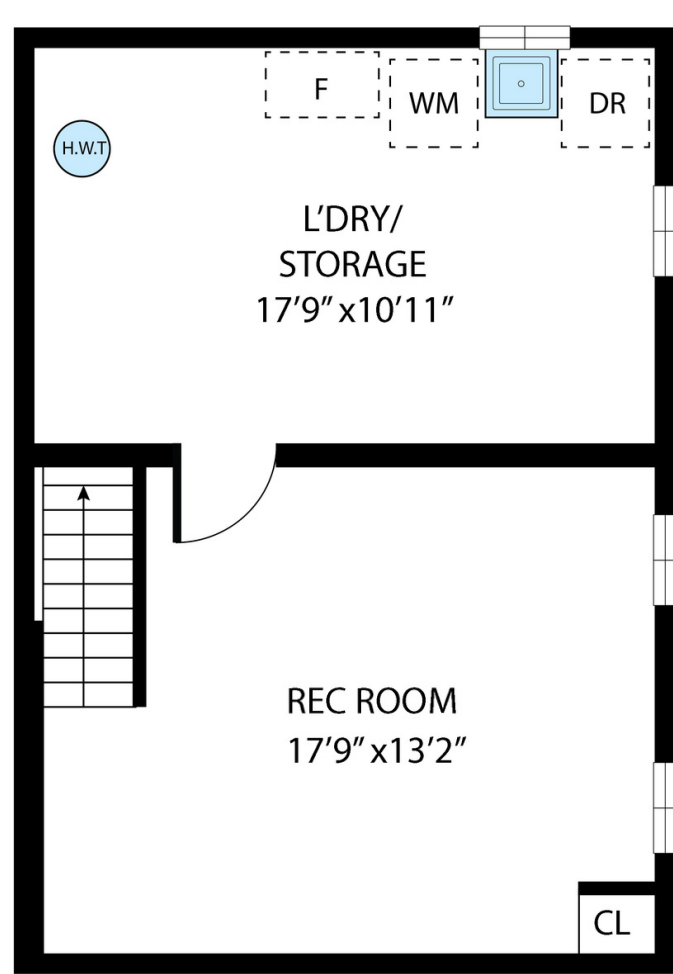


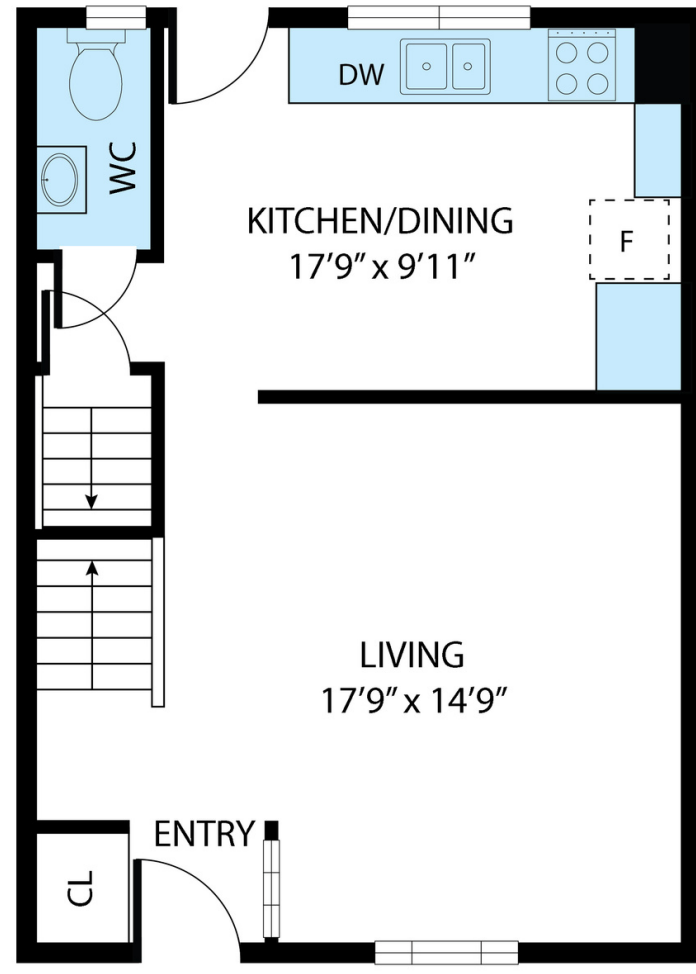
502 Upper Kenilworth Avenue

TOTAL APPROX. FLOOR AREA 1,467 SQ.FT

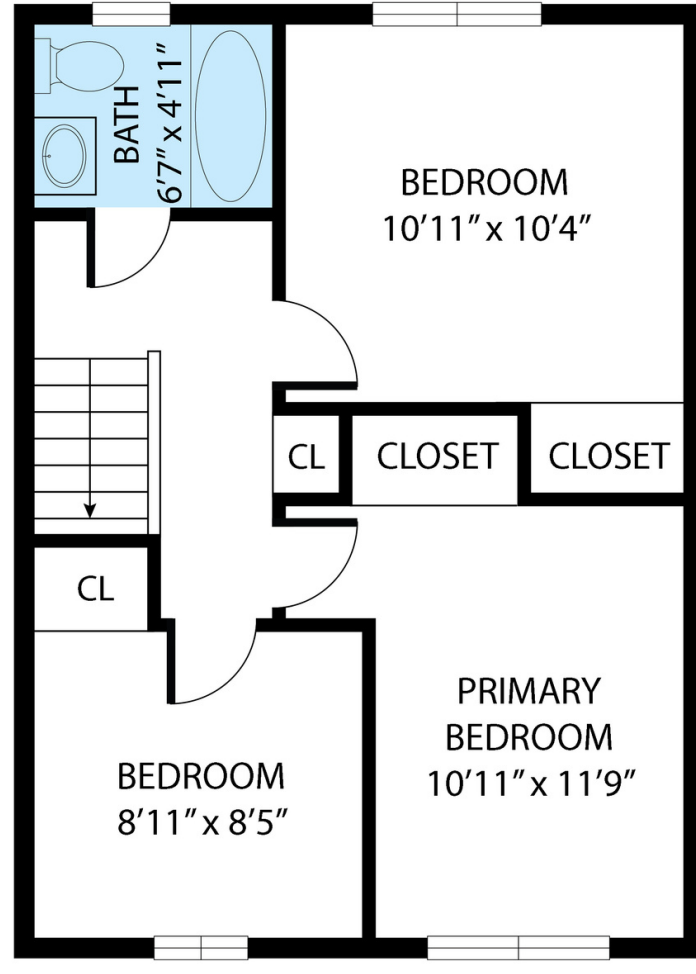
Whilst every attempt has been made to ensure the accuracy of the floor plan contained here, measurements of doors, windows, rooms and any other items are approximate and no responsibility is taken for any error, omission, or misstatement. This plan is for illustrative purposes only and should be used as such by any prospective purchaser.



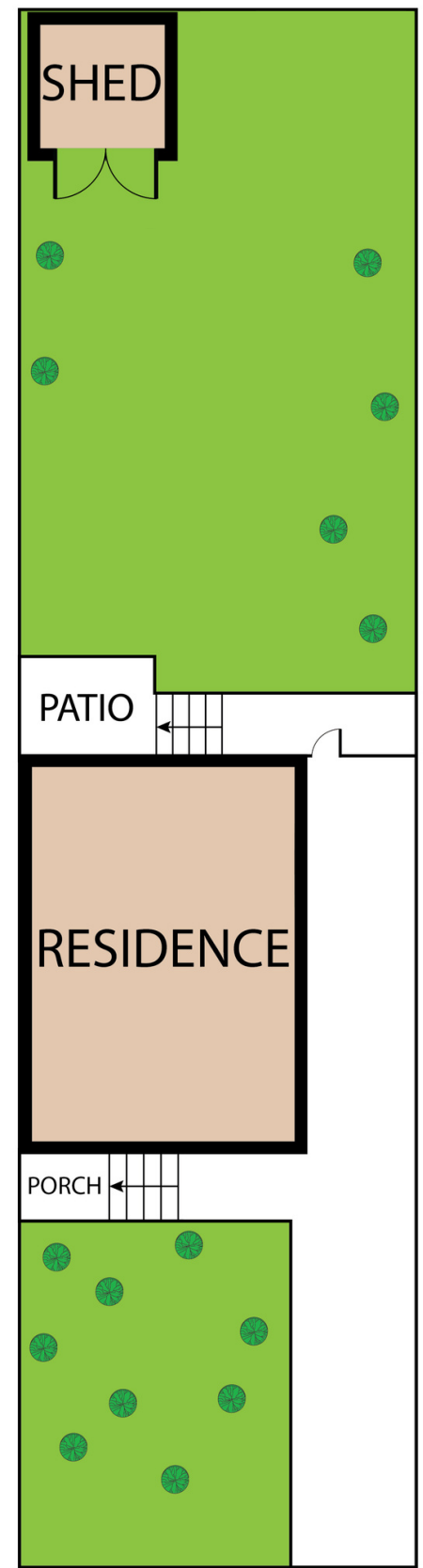
BASEMENT : 477 SQ.FT



MAIN FLOOR : 495 SQ.FT



SECOND FLOOR : 495 SQ.FT



DAVID BRADICA
 Broker of Record
 m. 905.766.3494 | o. 905.812.8123
 homes@davidbradica.com