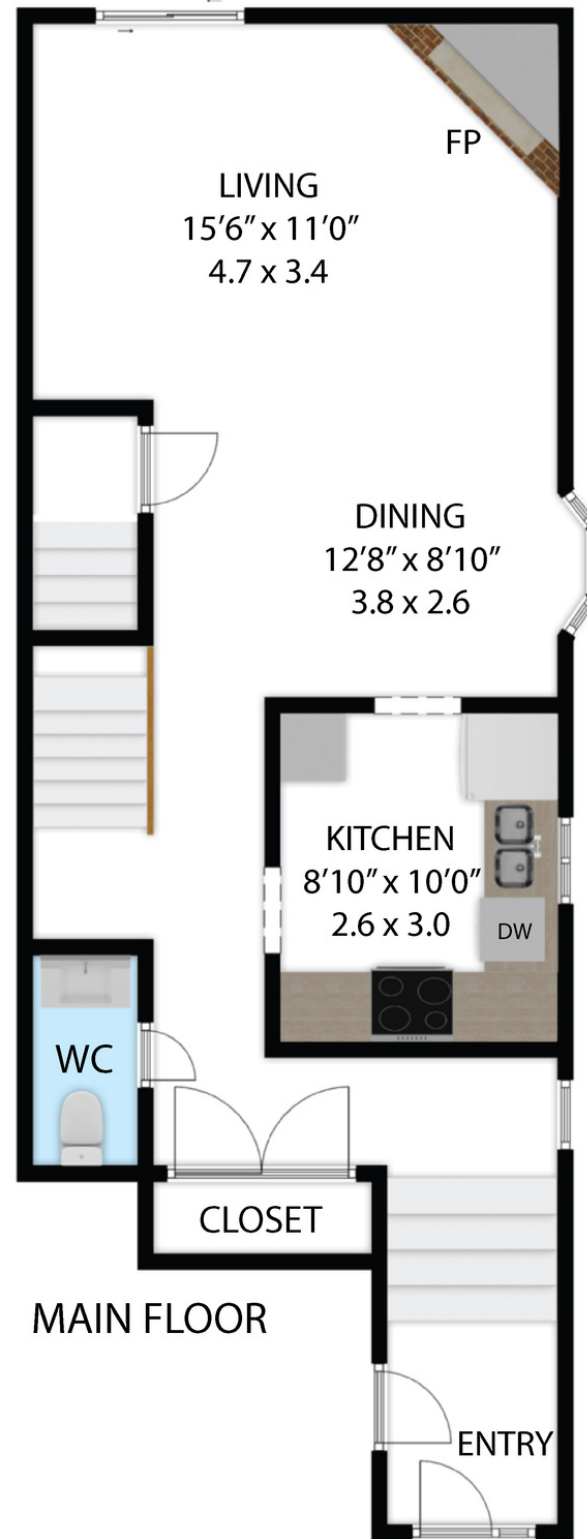
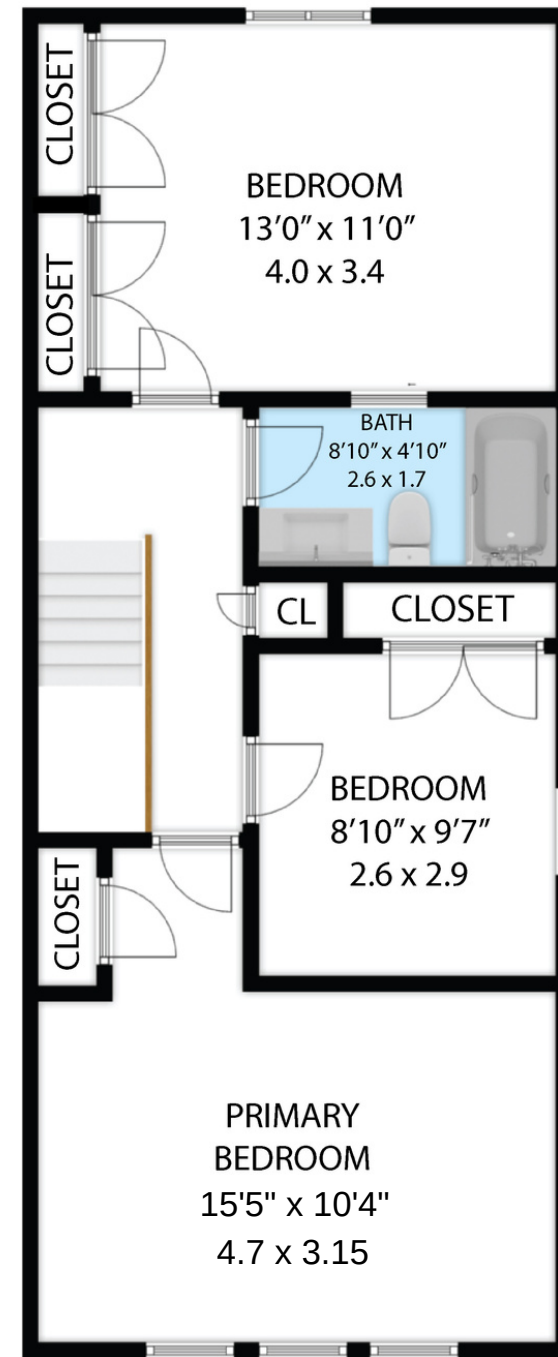


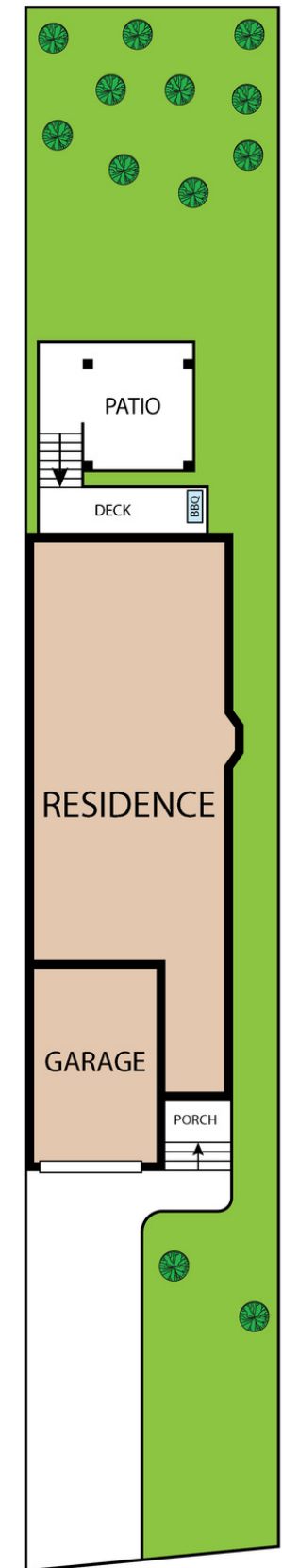
BASEMENT



MAIN FLOOR



SECOND FLOOR

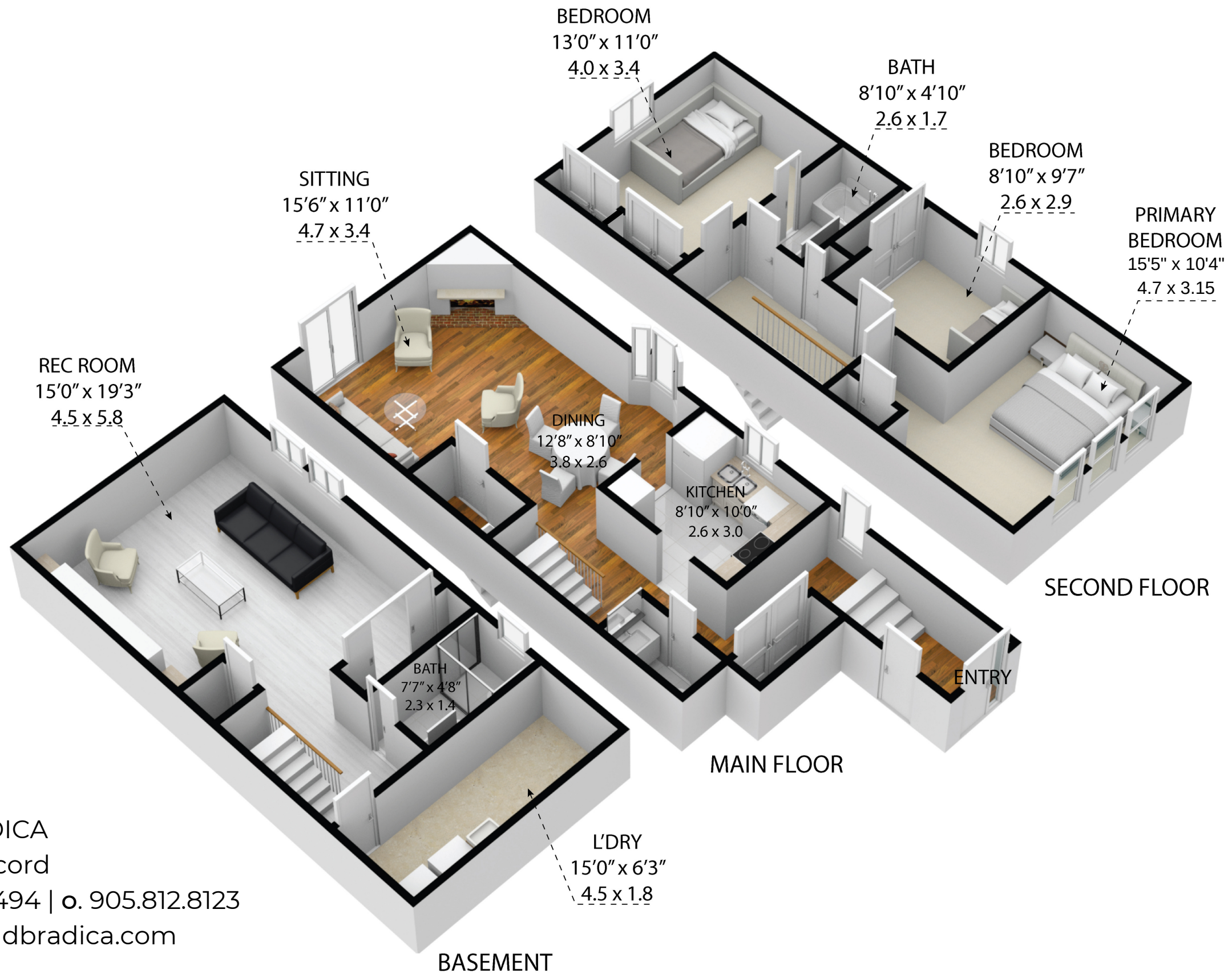


DAVID BRADICA
 Broker of Record
 m. 905.766.3494 | o. 905.812.8123
 homes@davidbradica.com

1332 Treeland Street
 TOTAL APPROX. FLOOR AREA - 2,056 SQ. FT - 190 SQ. M

Whilst every attempt has been made to ensure the accuracy of the floor plan contained here, measurements of doors, windows, rooms, and any other items are approximate and no responsibility is taken for any error, omission, or misstatement. This plan is for illustrative purposes only and should be used as such by any prospective purchaser.

BASEMENT	:	621 SQ.FT - 57 SQ.M
MAIN FLOOR	:	712 SQ.FT - 66 SQ.M
SECOND FLOOR	:	723 SQ.FT - 67 SQ.M
TOTAL AREA	:	2,056 SQ.FT - 190 SQ.M



DAVID BRADICA
 Broker of Record
 m. 905.766.3494 | o. 905.812.8123
 homes@davidbradica.com

1332 Treeland Street
 TOTAL APPROX. FLOOR AREA - 2,056 SQ. FT - 190 SQ. M

Whilst every attempt has been made to ensure the accuracy of the floor plan contained here, measurements of doors, windows, rooms, and any other items are approximate and no responsibility is taken for any error, omission, or misstatement. This plan is for illustrative purposes only and should be used as such by any prospective purchaser.

BASEMENT	:	621 SQ.FT - 57 SQ.M
MAIN FLOOR	:	712 SQ.FT - 66 SQ.M
SECOND FLOOR	:	723 SQ.FT - 67 SQ.M
TOTAL AREA	:	2,056 SQ.FT - 190 SQ.M